

FRIENDS OF WAIUTA

PO Box 83, Reefton 7851

enquiries@waiuta.org.nz www.waiuta.org.nz

August 2012

Welcome to our winter newsletter with the hot news that Oceana Gold might be just one drill hole away from resuming mining beneath Prohibition Hill. Flip this sheet over for a quick preview of the company's dramatic graphic showing where more than 650,000 ounces of gold wait to be won, then come back here for more about gold and other goings-on.

JULY MEETING

Ten of us enjoyed the warmth of Hunters' lounge for the only Reefton meeting of the year. A major item was the annual financial statement from treasurer Tracey Hampton - thanks to her for the customary well-presented report which you'll find enclosed with this letter. Afterward a few members headed up to Waiuta for a bit of work and exploration - not a remake of 'Last of the Summer Wine' as somebody unkindly suggested.

HEADS UP FROM DOC

The Department of Conservation's weed spraying programme has been effective, even exposing some building remains on Nob Hill that were previously obscured by a great growth of gorse. Ranger trainees from Nelson Polytech gave the growth on Skip Road a trim and reopened the old track to the magazine. Willows on the sawmill site will be under attack next. Contaminated soil found recently at the Snowy battery site has been covered, but sad to say the army probably will be called in to lower one of the badly rusted agitating tanks.

BOOK REPRINT

We're glad to announce that our book is back in print at last, with a new chapter covering events up to the centennial. Price is now \$49.95 - real value.

DISTANT MEMBERS

Among summer visitors were our UK members, Syd and Liz Moyle, touring NZ with Liz's sister Sue. They spent a day at Waiuta where there happened to be one of the Red Huts from the 'Little Earth' model village. Syd was interested to see it (photo next page) as his uncle Tom Moyle lived in one of the huts during the 1930s. They paid their sub ahead for the next ten years but we hope to see them back sooner than that.

BLACKWATER KIDS PIC

Les Bannan has filled some name gaps for the photo in our December 2011: David Hampton in front of the post, Mrs Margaret Palmer between her children Dudley and Margaret. Les suggested Jeanette 'Poss' Hill for the girl at front right, but through her nephew Darryl Robertson, Jeanette has told us it was not her. Incidentally, the Hills and Palmers were all cousins.



Eddie Stancombe, Alan Stephens and Graeme Farrant outside Hurley's Leader tunnel, source of Waiuta's richest quartz - although there wasn't a lot of it. None now, but they look happy enough.

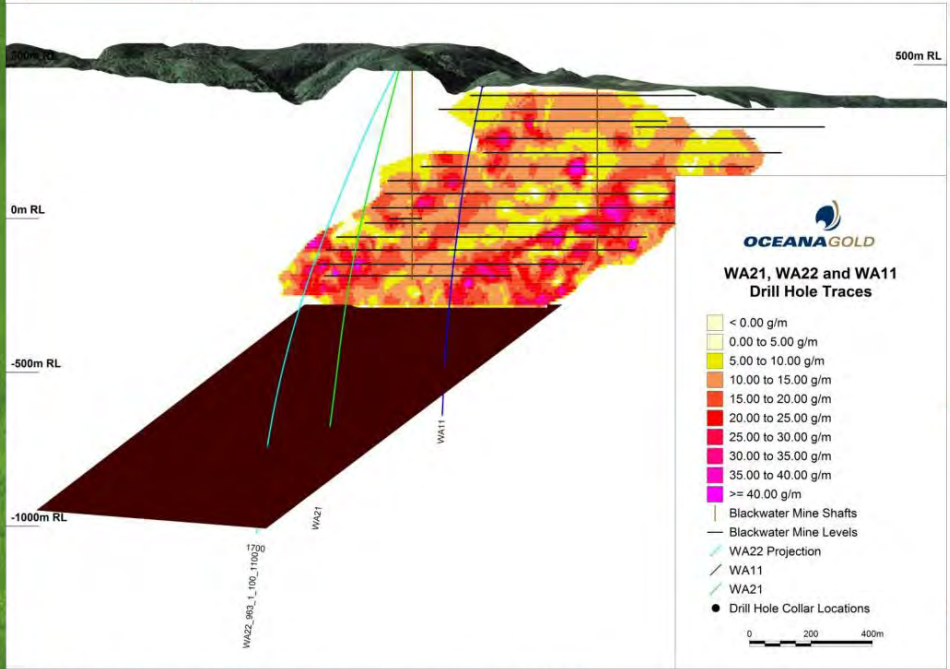
HOPS

In response to a query about hops a while ago, Errol Clements says he and his uncle Bruce planted some. However someone else has recalled Jos Divis working on a brew during the 1950s or '60s, so perhaps there were earlier plantings as well.

NEWS FROM OGL

Oceana Gold's Reefton manager Nigel Slonker told us that following problems deep down hole No 2, drilling at the Prohibition was progressing again, with one more hole to complete before a decision on mining is made. If the next two 'hits' are good, the go-ahead is "almost a guarantee". Meanwhile up on Globe Hill production over seven years since reopening has topped 400,000 ounces, almost doubling the historic output and putting the grand total well beyond Waiuta's 740,000 ounces. Nothing that cannot be caught up, mind you...

Blackwater Reef - Potential for >650Koz Au at 21g/t



- Mined 1907 - 51 to 750m.
- Quartz reef 0.61m wide, average grade 21.3g/t (14.2 g/t recovered for 740 Koz)
- 4 holes to ascertain grade continuity with depth.
- Historical 1000oz / vertical metre.
- 2012 budget US\$5.53

WA11 intercept 280m below old workings (1996)
 WA21 intercept 510m below old workings
 WA22 targeted to intercept target 650m below old workings

Sorry we had to reduce this to fit it in, but you'll get the drift - extracted gold shown in colour with the dark patch below indicating reef to be mined.

NEXT MEETING

There's just room to say we'll be meeting on Saturday 24 November at 3pm in Waiuta Lodge with a barbecue to follow - bring a salad or something for dessert. Everybody welcome.



English member Syd Moyle at Waiuta with a model of a Red Hut - maybe the one his uncle occupied.



Grant Robertson, Alan Stephens, Bruce the (female) dog and John Griffin who helped with delivery of fence posts donated by Grant. More about these in the next letter.